

# 7.0.0.0 New Software version

---

In the 7.0.0.0 software version we've introduced the following options:

- CHANGE-OVER page:
  - In the parameter "No. of cylinders" it has been introduced the option "1 Cylinder", " 3 Cylinder twin jet" and "4 Cylinder twin jet".
- SENSORS page:
  - It has been introduced the new option "Full Recognition"
  - It has been introduced the possibility to select the new sensor "AEB5P5" on "Pressure Sensor" selection
  - It has been introduced the management "Gas electro valves opened in advance"
- MAP page:
  - It has been introduced the new map "Petrol Contribution"
- MODIFY CARB. page:
  - It has been introduced the new option "Stop Adaptativity on Idle"
  - It has been introduced the new option "OBD Connection on Petrol mode"
  - It has been introduced the new option "Reset errors only with engine off"

---

Furthermore we've introduced the new firmware that manages the new functions in the software, the new firmware will be uploaded on the computer during the installation of the new software version. The new available firmware are the following:

- For MP32 - MP32\_#00574
- For MP48 - 2001MP\_#01152
- For MP48OBD - 2001MPOBD\_#00991
- For MP6C - MP6C\_#01346
- For MP8C - MP6C\_#01346

**ATTENTION:** In order to use the new functions available in the software, it is necessary to update the ECUs firmware with the suitable firmware from the list above mentioned.

If you do not load the new firmware in the ECU, it will not be possible to use the new available functions.

## CHANGE-OVER Page

In the CHANGE-OVER page, in the “No. of cylinders” parameters we’ve introduced the following new options :

- **1 Cylinder: Option available with MP32, MP48 and MP48OBD ECUs.**

By selecting this option, the ECU will be configured to work on mono cylinder engines, in this case the petrol injector will have to be cut with the blu and blu-black wires of gas wiring and will be piloted only the gas injector A.

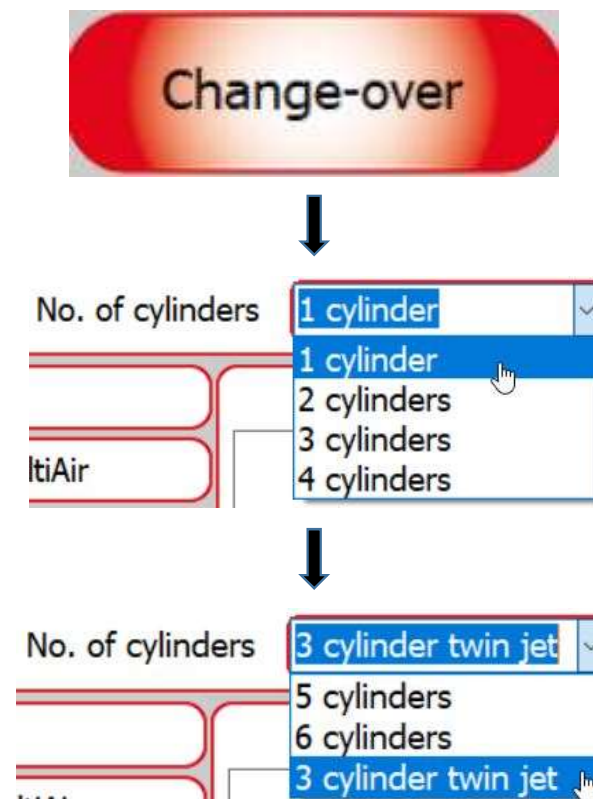
- **3/4 Cylinder Twin Jet: Option available with MP6C and MP8C ECUs.**

This option allows to manage the three or four cylinder engines with two injectors for cylinder, as it happens with some Hyundai or Nissan engines.

By selecting this option the ECU cuts and reads each petrol injector but it will pilot only three or four Gas injectors according to the selected option.

In this way it is possible to install only three or four gas injectors instead of using six or eight like to petrol.

**ATTENTION:** In order to use the new functions available in the software, it is necessary to update the ECUs firmware with the last available firmware; if the firmware is not updated it will not be possible to use the new functions available in the software.



---

## SENSOR Page

In the SENSOR page we've introduced the following options:

- **FULL RECOGNITION:**

**Option available with MP32, MP48, MP48OBD, MP6C and MP8C ECUs**

Usually, after the change-over to petrol for low gas pressure, it is necessary to press the switch to change on petrol mode the system and to commute the switch.

After the Gas fueling, it is necessary to push again the switch in order to change the system to gas mode.

By selecting the option "**Full recognition**" the ECU recognizes when the Gas fueling occurred and automatically it will change the switch to the Gas position without requiring to press it manually.



Level sensor

Full recognition

**ATTENTION:** In order to use the new functions available in the software, it is necessary to update the ECUs firmware with the last available firmware; if the firmware is not updated it will not be possible to use the new functions available in the software.

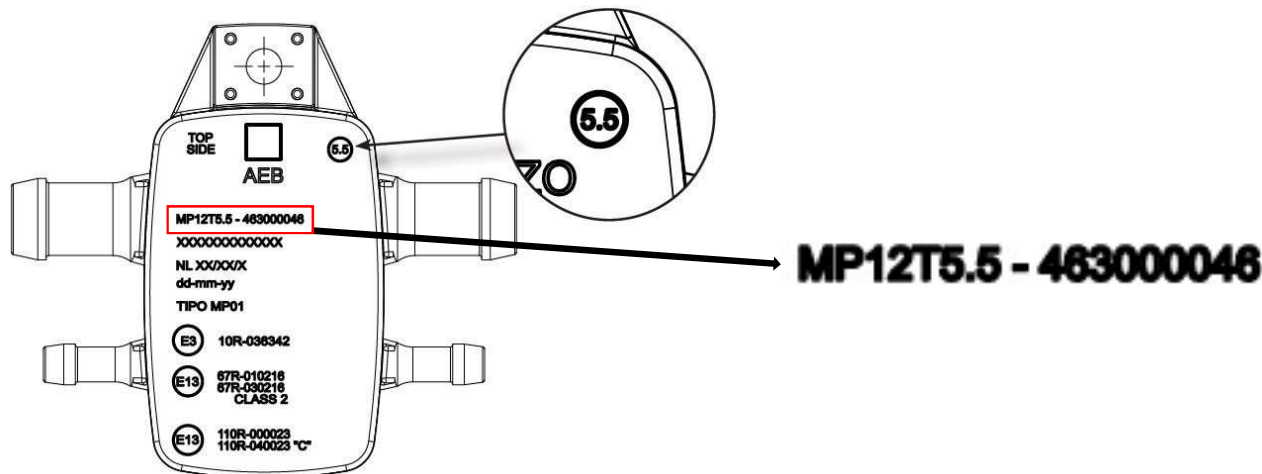
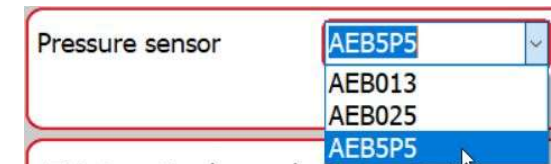
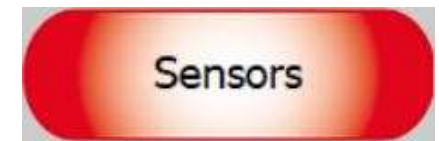
## SENSOR Page

- **Pressure Sensor AEB5P5: available with MP32, MP48, MP48OBD, MP6C, MP8C ECUs**

In the list of «Pressure Sensor» is has been introduced the new AEB5P5 model, this type of sensor must be selected when in the kit is available the new Pt-Map sensor AEB5P5 model.

The new Pt-Map sensor differs from the previous model for the different code and for the 5.5 symbol printed on the upper part of the sensor, as shown on the picture.

**ATTENTION:** it is important to check which version of PT-Map sensor is present in the kit and select the type AEB5P5 in the software under "PRESSURE SENSOR". If the correct pressure sensor type is not selected, the system will read an incorrect GAS pressure.



## SENSOR Page

### - GAS ELECTROVALVES OPENED IN ADVANCE

This option, already provided in the previous version, has been modified and now it is possible to manage a pre-opening time of electro valves from 0 to 10 seconds.

The time set corresponds to the electro valves opening time before the gas injectors start to work.

This option changes according to the connected ECU as follows:

#### With MP48OBD – MP6C – MP8C ECUs

These ECUs have two different outputs for the valves of the reducer and of the tank, so it is possible to manage separately the two opening times.

EV1 refers to the reducer valve (blue wire)

EV2 refers to the tank valve (blue-white wire)

#### With MP32 – MP48 ECUs

These ECUs have only one output for the valves of the reducer and of the tank, so it is possible to set only one time of pre-opening time for both valves.

**ATTENTION:** In order to use the new functions available in the software, it is necessary to update the ECUs firmware with the last available firmware; if the firmware is not updated it will not be possible to use the new functions available in the software.



MP48OBD – MP6C – MP8C

Gas electrovalves opened in advance	
EV1 [0 - 10]	<input type="text" value="5"/> s
EV2 [0 - 10]	<input type="text" value="10"/> s

MP32 – MP48

Gas electrovalves opened in advance	
EV1 [0 - 10]	<input type="text" value="4"/> s

# MAP Page

## PETROL CONTRIBUTION, available with MP32, MP48 and MP48OBD ECUs

In the «MAP» it has been introduced a new petrol contribution map; in order to change the visualization from the gas Map to the petrol contribution Map it is necessary to select the "PETROL CONTRIBUTION" option available under the MAP button. Then the Map has to be enabled by selecting "ENABLE MAP", now it is possible to modify the value of the Map.

The petrol contribution time will be defined by the values that are entered in the map, these values are the percentage referred to the petrol injection time that the engine is using.

**Example:** in the figure aside, in the boxes where the value 10 is entered, the control unit will give a petrol contribution corresponding to 10% of the reference petrol injection time, therefore at 14.00 ms a contribution of 1.4 ms of petrol will be given, at 18.00 ms a contribution of 1.8 ms of fuel will be given.

**Attention:** it is necessary to consider that the petrol injector has its own mechanical delay in opening, so if a too small petrol contribution is given, the injector will not be able to open and therefore no contribution will be given.

**Example:** if a contribution of 10% is set at 2ms petrol, the contribution should be 0.2 ms but with this time the injector will not be able to open. It is therefore advisable to enter values in the map in order to have petrol contributions of at least 2 ms.

T.inj - RPM	500	1000	1500	2000	2500	3000	3500	4000	4500	5000	5500	6000
2,00	0	0	0	0	0	0	0	0	0	0	0	0
2,50	0	0	0	0	0	0	0	0	0	0	0	0
3,00	0	0	0	0	0	0	0	0	0	0	0	0
3,50	0	0	0	0	0	0	0	0	0	0	0	0
4,50	0	0	0	0	0	0	0	0	0	0	0	0
6,00	0	0	0	0	0	0	0	0	0	0	0	0
8,00	0	0	0	0	0	0	0	0	0	0	0	0
10,00	0	0	0	0	0	0	0	0	0	0	0	0
12,00	10	10	10	10	10	10	10	10	10	10	10	10
14,00	10	10	10	10	10	10	10	10	10	10	10	10
16,00	10	10	10	10	10	10	10	10	10	10	10	10
18,00	10	10	10	10	10	10	10	10	10	10	10	10

Petrol contribution     Enable Map



---

## CARB. MODIFY Page

On the CARB. MODIFY Page we've introduced the following options:

- **Stop adaptativity on idle: available with MP48OBD, MP6C, MP8C ECUs.**  
When the gas adaptativity strategy is enabled, by selecting this option it is possible to stop the adaptativity strategy below of one rpm reference that can set in the "RPM Threshold for Adaptativity" parameter available in the same page.
- **OBD Connection on petrol mode: available with MP48OBD, MP6C, MP8C ECUs.**  
Usually the ECU connects to the OBD after the system has changed to gas mode.  
By selecting this option, the connection to the OBD will occur also when the system is working on petrol mode.
- **Reset errors only with engine off: available with MP48OBD, MP6C, MP8C ECUs.**  
Selecting this option the ECU will make the errors erasing only at engine key-off.



- Stop adaptativity on idle
- OBD connection in petrol mode
- Reset errors only with engine off

**ATTENTION:** In order to use the new functions available in the software, it is necessary to update the ECUs firmware with the last available firmware; if the firmware is not updated it will not be possible to use the new functions available in the software.